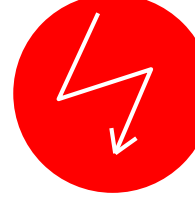
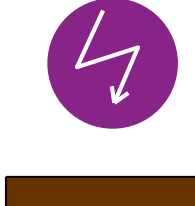




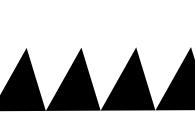
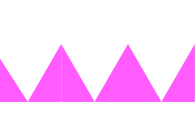

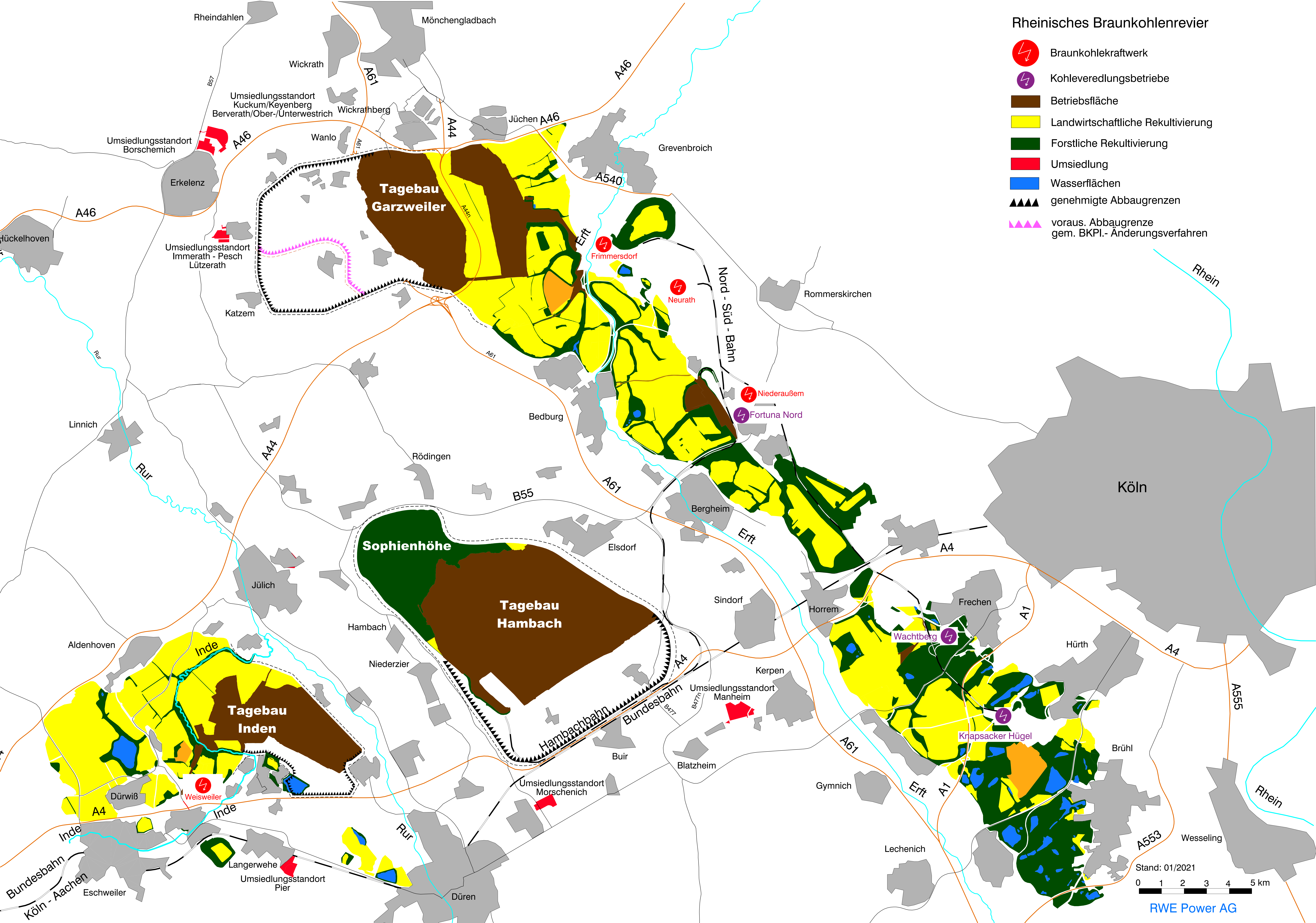


Rheinisches Braunkohlenrevier

-  Braunkohlekraftwerk
-  Kohleveredlungsbetriebe
-  Betriebsfläche
-  Landwirtschaftliche Rekultivierung
-  Forstliche Rekultivierung
-  Umsiedlung
-  Wasserflächen
-  genehmigte Abbaugrenzen
-  voraus. Abbaugrenze gem. BKPl.- Änderungsverfahren



Stand: 01/2021
0 1 2 3 4 5 km